



# MAVERICK MANAGEMENT CORP

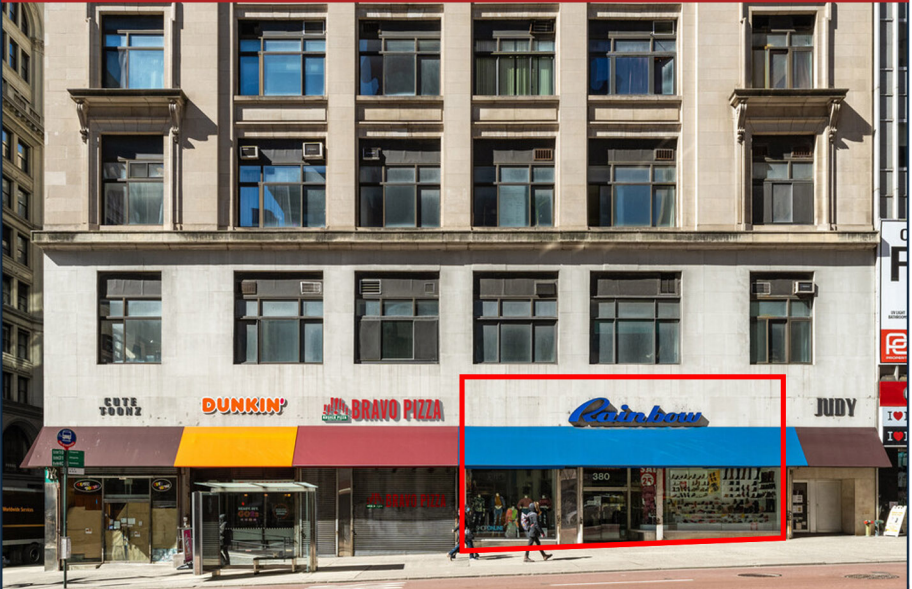
1000 PENNSYLVANIA AVENUE, BROOKLYN NY 11207

380 Fifth Avenue  
New York, NY

CALL LEASING : 718 485-3682 x 4240

- 7,300 Total Square Feet
- +/- 4.950 Square Feet on Ground Floor
- +/- 2.350 Square Feet on Mezzanine
- Above the Northwest Corner of W 35th St
- One Block North of the Empire State Building
- The Empire State Building Attracts over 4.3 million Visitors Each Year

## GREAT RETAIL SPACE AVAILABLE



### DEMOGRAPHICS

	1 Mile	3 Miles	5 Miles
Population	189.696	1.211.864	2.610.090
Median Household Income	\$77.937	\$78.918	\$63.170
Household	103.665	578.125	1.105.205

### JOIN THESE RETAILERS



WWW.MAVERICKMGMT.COM

LEASING: 718 485-3682 x4240

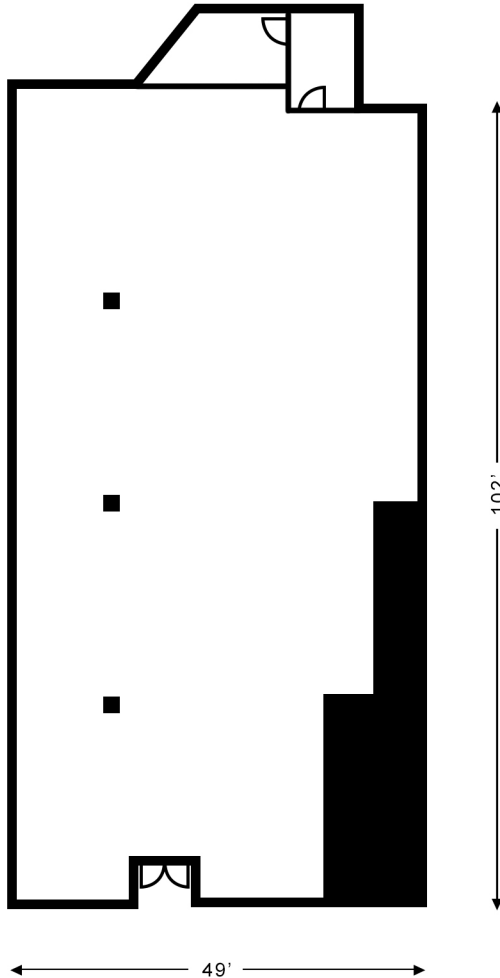
LEASING@MAVERICKMGMT.COM



# MAVERICK MANAGEMENT CORP

1000 PENNSYLVANIA AVENUE, BROOKLYN NY 11207

380 Fifth Avenue, New York, NY





# MAVERICK MANAGEMENT CORP

1000 PENNSYLVANIA AVENUE, BROOKLYN NY 11207

380 Fifth Avenue, New York, NY

