



MAVERICK MANAGEMENT CORP

1000 PENNSYLVANIA AVENUE, BROOKLYN NY 11207



380 FIFTH AVE
NEW YORK, NY

CALL LEASING : 718 458-3682 x 4240

- 13,900 Total square feet
- ± 4,950 Square feet on the ground floor
- ± 2,350 Square feet on the mezzanine
- ± 6,600 Square feet on the lower level
- Above the northwest Corner of W 35th St
- One block north of the Empire State Building
- The Empire State Building attracts over 4.3 million visitors each year

RETAIL SPACE AVAILABLE



DEMOGRAPHICS

data source: 2013, Site USA, Chandler, Arizona

	1 Mile	3 Miles	5 Miles
2012			
Population	189,696	1,211,864	2,61,090
Median Household Income	\$77,937	\$78,918	\$63,170
Household	103,665	578,125	1,105,205

JOIN THESE RETAILERS

	DUANereade	Walgreens	CVS pharmacy	Foot Locker
TD Bank	CHASE	citibank	Capital One	Bank of America
MANGO	bebe	BANANA REPUBLIC	EXPRESS	Dezigual.
				Reebok

WWW.MAVERICKMGMT.COM

LEASING:

718 485-3682 x4240

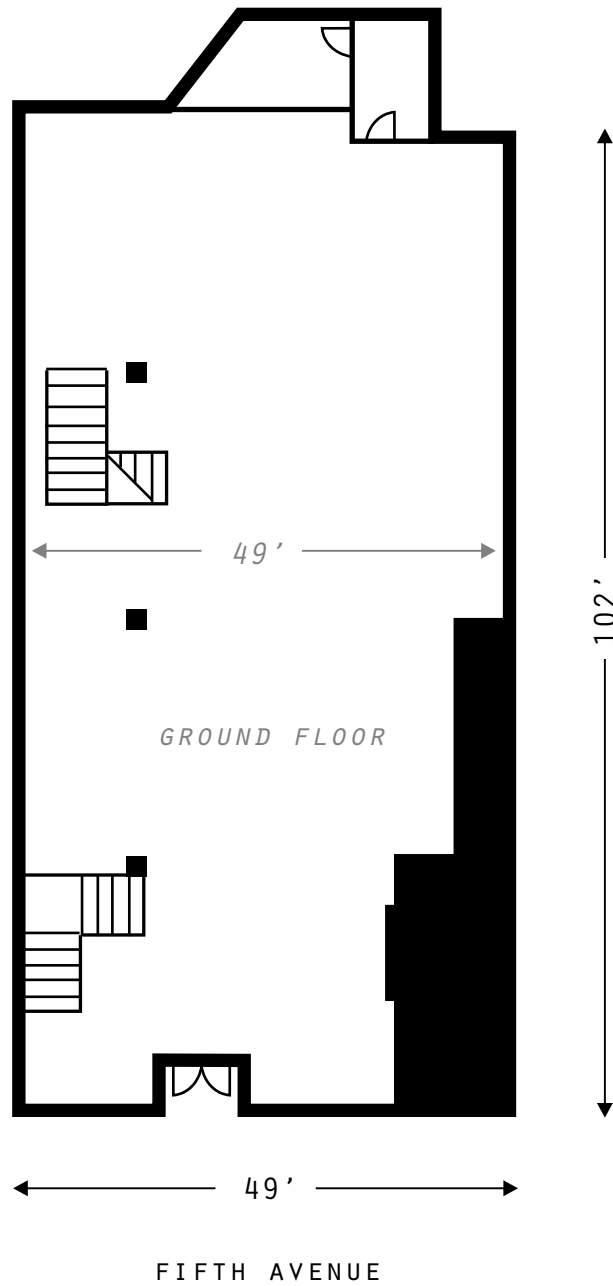
LEASING@MAVERICKMGMT.COM



MAVERICK MANAGEMENT CORP

1000 PENNSYLVANIA AVENUE, BROOKLYN NY 11207

380 FIFTH AVE NEW YORK, NY

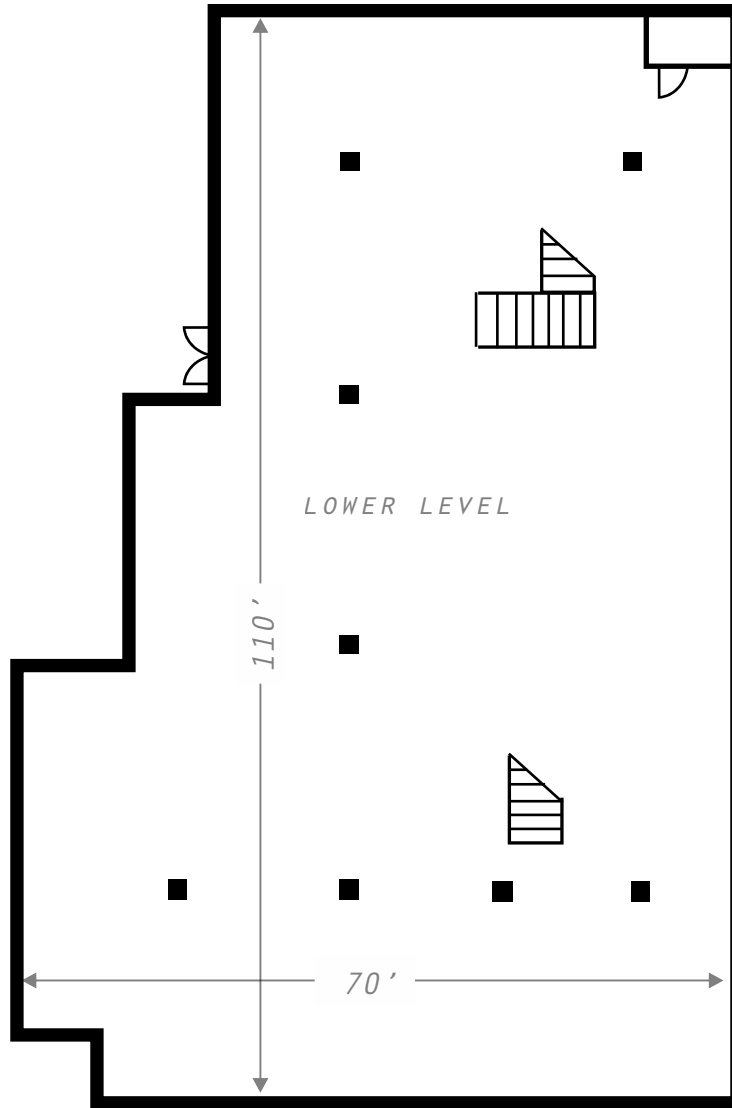




MAVERICK MANAGEMENT CORP

1000 PENNSYLVANIA AVENUE, BROOKLYN NY 11207

380 FIFTH AVE NEW YORK, NY



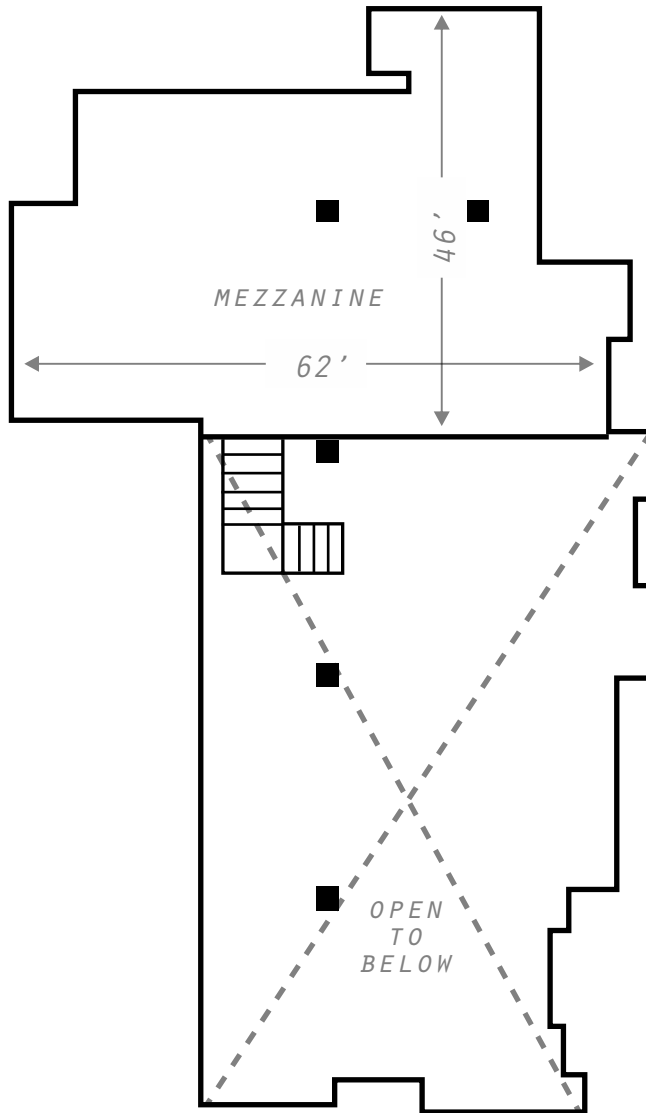
FIFTH AVENUE



MAVERICK MANAGEMENT CORP

1000 PENNSYLVANIA AVENUE, BROOKLYN NY 11207

380 FIFTH AVE NEW YORK, NY



FIFTH AVENUE