



# MAVERICK MANAGEMENT CORP

1000 PENNSYLVANIA AVENUE, BROOKLYN NY 11207

117-121 E State Street,  
Trenton, NJ

CALL LEASING : 718 458-3682 x 4240

- +/- 49,500 Square Feet - Will Divide
  - +/- 16,000 Square Feet on each of the 2nd, 3rd and Lower Levels
  - +/- 1,500 Square Feet on the Ground Level
- In the Heart of the Trenton Central Retail District
- Convenient to Multiple Governmental Office Buildings
- Entrances on E State Street and Windsor Alley

**GREAT OFFICE / EDUCATIONAL / GYM SPACE AVAILABLE**



### DEMOGRAPHICS

data source: 2013, Site USA, Chandler, Arizona

	1 Mile	3 Miles	5 Miles
Population	27,091	146,691	245,759
Median Household Income	\$31,642	\$50,725	\$62,573
Household	10,363	54,175	93,011



WWW.MAVERICKMGMT.COM

LEASING: 718 485-3682 x4240

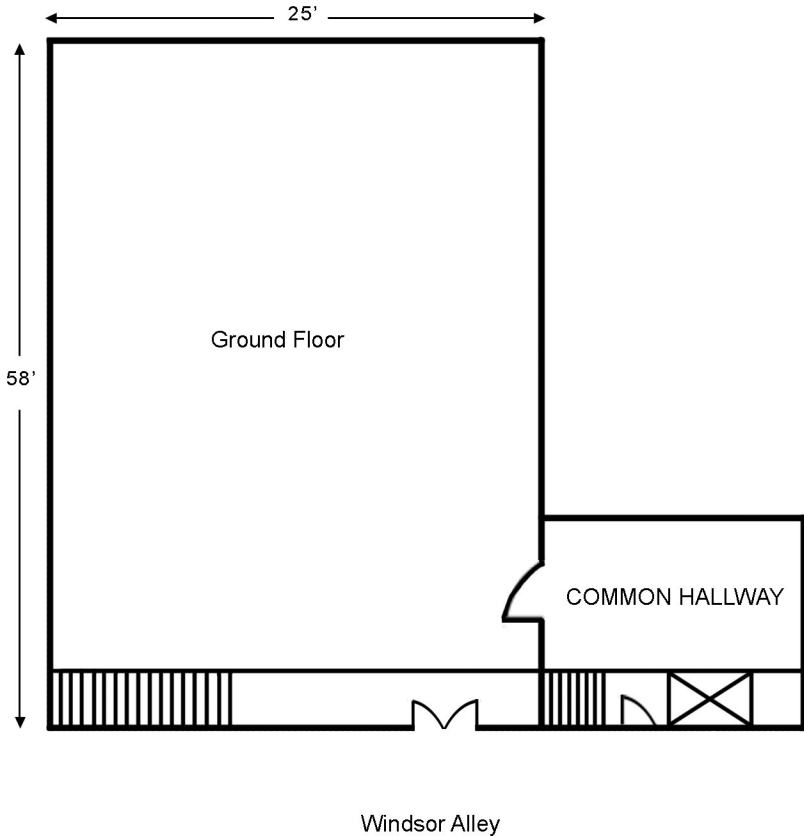
LEASING@MAVERICKMGMT.COM



# MAVERICK MANAGEMENT CORP

1000 PENNSYLVANIA AVENUE, BROOKLYN NY 11207

117-121 E State Street, Trenton, NJ

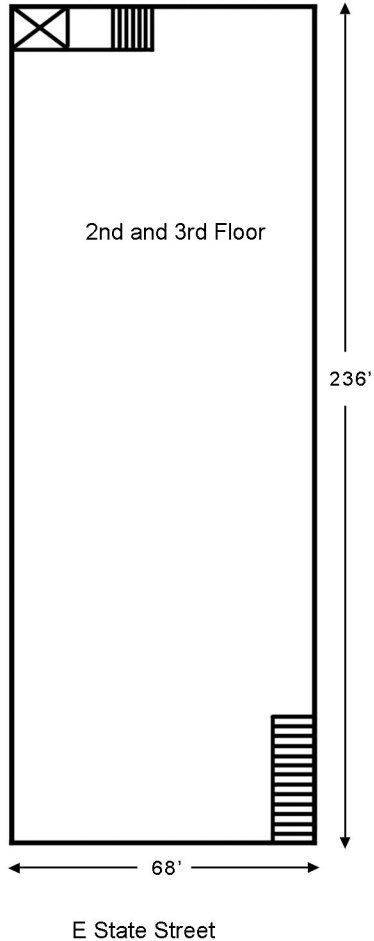




# MAVERICK MANAGEMENT CORP

1000 PENNSYLVANIA AVENUE, BROOKLYN NY 11207

117-121 E State Street, Trenton, NJ





# MAVERICK MANAGEMENT CORP

1000 PENNSYLVANIA AVENUE, BROOKLYN NY 11207

117-121 E State Street, Trenton, NJ

